




imou

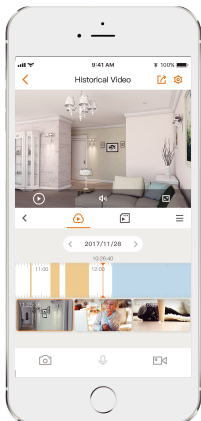


Cell Pro

Wire-Free Security System

Cell Pro is a 100% wire-free security system. Powered with rechargeable battery, you can place the camera anywhere, no need to worry about network cabling or power wiring hassles. Thanks to its IP65 weatherproof design you can use the camera either indoor or outdoor in different scenarios.

-  **1080P FHD Video**
See more than 720P
-  **100% Wire-Free**
Free of network cabling and power wiring hassles
-  **Rechargeable Battery**
6 months battery for a full charge*
*Frequent alerts may accelerate battery consumption
-  **PIR Detection**
High quality passive IR detector for reducing false alerts
-  **Two-way Talk**
Real-time talk with people in front of the camera
-  **H.265 Codec**
Save more high-quality video in less space
-  **IP65**
Weatherproof for outdoor conditions
-  **Cloud Service**
Live video, storage, alarm alerts and more
-  **Local Backup**
Connect a USB drive to the base station for local recording backup



Stay close with what you care

With Cloud service, you will have access to what you care as long as Internet is available. You can record daily or motion videos on Cloud and playback anytime anywhere.



Specifications

Cell Pro

Camera

1/2.7" 2 Megapixel Progressive CMOS
 2MP (1920 x 1080)
 Night Vision: 10m(33ft) Distance
 2.8mm Fixed Lens, F2.2
 Field of View : 110° (H), 61° (V), 130° (D)

Video

Video Compression : H.265/H.264
 Up to 20fps Frame Rate

Notice Management

PIR Detection

Network

Wi-Fi: IEEE802.11b/g/n,50m(164ft) Open Field
 Imou App: iOS, Android

Base Station

Network

1 x 100Mbps Ethernet Port
 Wi-Fi: IEEE802.11b/g/n, 100m(328ft) Open Field, 2 X 2 MIMO

Auxiliary Interface

1 x DC Power Port	1 x LAN Port
1 x Reset Button	1 x USB2.0 Port
1 x Sync Button	

Auxiliary Interface

Built-in Mic & Speaker
 Micro USB Power Port
 SYNC Button

General

DC 5V 1A Power Supply or Rechargeable Battery Power
 6 Months Battery for a Full Charge
 Power Consumption: ≤3W
 IP65
 Working Environment: -20°C~+45°C (-4°F~113°F),
 Less Than 95%RH
 Dimension: 77 x 77 x 71.5mm(3.03 x 3.03x 2.81 inch)
 Weight: 350g(0.77lb)
 CE, FCC, UL

General

DC 12V 2A Power Supply
 Power Consumption: ≤6W
 Working Environment: -10°C~+50°C (14°F~122°F),
 Less Than 90%RH
 Dimension: 157 x 108 x 154mm(6.18 x 4.25 x 6.06inch)
 Weight: 270g(0.60lb)

Purchase Options

Cell Pro Kit (1 Base Station + 1 Camera)



What's in the box

- | | |
|-------------------|-----------------------|
| 1 x Camera | 1 x Base Station |
| 1 x Power Cable | 1 x Power Adapter |
| 1 x Bracket | 1 x Network Cable |
| 1 x Battery | 1 x Quick Start Guide |
| 1 x Screw Package | 1 x Positioning Map |

Cell Pro Kit (1 Base Station + 2 Cameras)



What's in the box

- | | |
|--------------------|-----------------------|
| 2x Cameras | 1 x Base Station |
| 2 x Brackets | 1 x Power Adapter |
| 2 x Batteries | 1 x Network Cable |
| 2 x Screw Packages | 1 x Quick Start Guide |
| 1 x Power Cable | 1 x Positioning Map |

Cell Pro (Add on Camera)



What's in the box

- | | |
|-----------------------|--------------------------|
| 1 x Camera | 1 x Positioning Map |
| 1 x Quick Start Guide | 1 x Screw Package |
| 1 x Power Cable | 1 x Rechargeable Battery |
| 1 x Bracket | |

Adding Base station

Step 1

Power up the base station, and then connect the Ethernet port to your router with the network cable.

Step 2

The system indicator stays on with white light for 10 s, and then off, which means the base station is connected to the network.

Step 3

Scan the following QR code or search "Imou" in Google Play or App Store to download and install the Imou App.

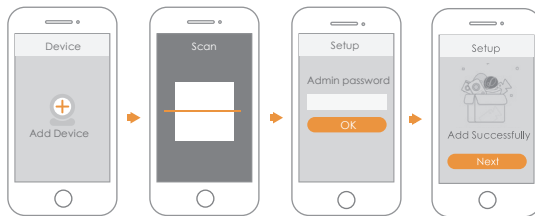


Step 4

Run Imou App, and then register an account for first use.

Step 5

Do the following operations to finish adding base station.



Pairing Camera

Step 1

On the base station: Press the SYNC button, and then the system indicator on the base station flashes with white light.

Step 2

On the camera: Press the SYNC button, and then the indicator on the camera flashes with green light.



Note: You can pair six cameras at most with one base station, and pair one camera at a time. Keep the distance of the base station and the camera within 30 cm (12 inches) during pairing.

Step 3

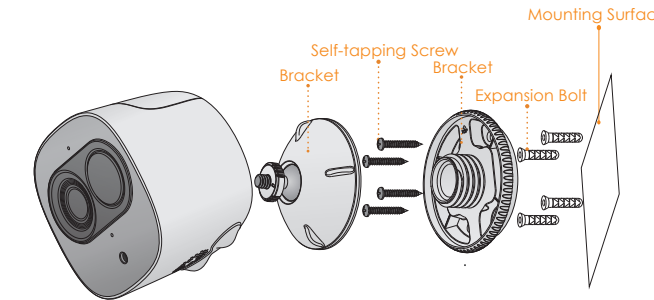
The pairing starts, and the indicators flash as described below:

- The system indicator on the base station stays on with white light for 10 s, and then off.
- The indicator on the camera stays on with green light for 10 s, and then off.

The pairing succeeded then.

Installing Camera

Note: Make sure the mounting surface is strong enough to hold at least three times the device weight.



Step1 Drill screw holes on the mounting surface as the positioning map shows, and then put in the expansion bolts.

Step2 Open the bracket, and then attach the bottom of the bracket to the mounting surface with the self-tapping screws.

Step3 Attach the other half of the bracket to the camera, then adjust the lens to the ideal angle, and then fix the bracket.

Safety Instructions

- Do not short circuit the battery with other metal.
- Do not heat the battery or throw it into fire.
- Do not take apart the battery or press it to make it deformed.
- Keep the battery away from children.
- It is recommended to use the original battery.
- Do not use the battery at temperature above 60°C/140°F.
- The battery cannot be charged at temperature below 0°C/32°F.
- Recycle the waste battery as local regulations instructed.

About the Guide

- This quick start guide is for reference only. Minor difference might be found in user interface.
- All the design and software here are subject to change without prior written notice.
- All trademarks and registered trademarks mentioned are the properties of their respective owners.
- Please visit our website or contact your local service engineer for more information.
- If there is any uncertainty or controversy, please refer to our final explanation.



Quick Start Guide

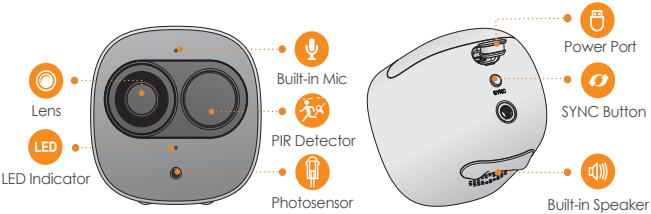
Version 1.0.2

Packing List



Note: The quantity of the camera and other accessories might vary with different models, and the actual product shall prevail.

Camera Introduction

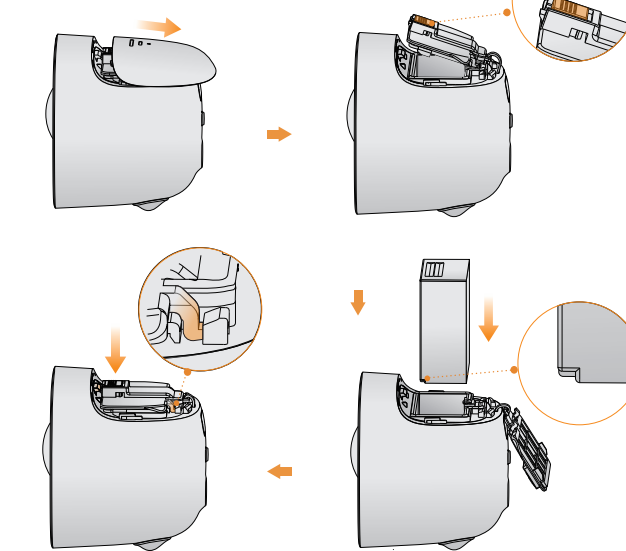


Note: Press the SYNC button to pair with the base station.
Press and hold the SYNC button for 8 s to reset the camera.

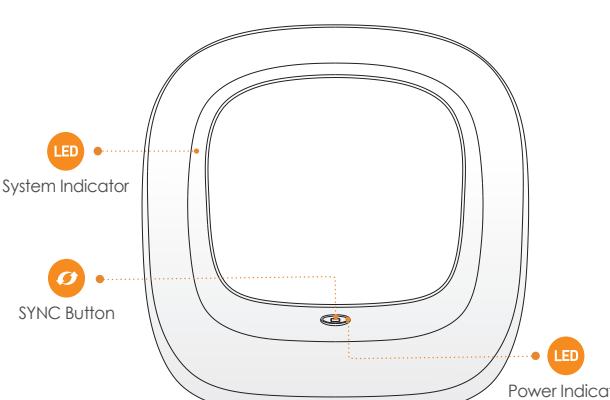
The pattern of the LED indicator is included in the following table.

LED Indicator Status	Device Status
Off	<ul style="list-style-type: none"> Sleeping mode Run out of battery
Green light on	<ul style="list-style-type: none"> Alarm is triggered Instructed to wake
Green light flashing	Reconnecting Wi-Fi
Green light quick flashing	Waiting for pairing with the base station
Green light stay on for 10 s, then off	Pairing succeeded
Red light stay on for 10 s, then off	Pairing timeout
Red light stay on for 1 s, then off	Reset completed

Installing Battery

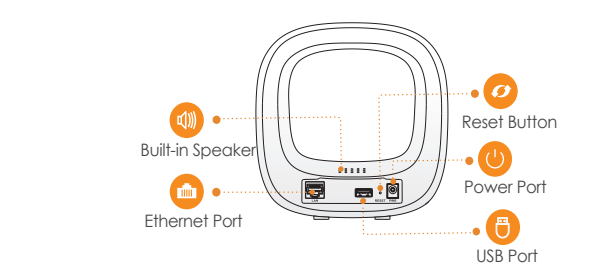


Base station Introduction



The pattern of the power indicator is included in the following table.

Power Indicator Status	Device Status
Off	Not powered up
Blue light stay on	Powered up properly



Note: Press the SYNC button to pair with cameras.
Press and hold the Reset button for 5 s to reset the base station.
You can connect USB drive to the USB port to record video.

Caution: The base station might format the USB drive, be sure to backup your data.
The pattern of the system indicator is included in the following table.

System Indicator Status	Device Status
Off	<ul style="list-style-type: none"> Not powered up Operating properly
Blue light flashing	Booting up
Yellow light flashing	Waiting for network connection
White light flashing	Waiting for pairing with cameras
White light stay on for 10 s, then off	Pairing succeeded
Red light stay on for 10 s, then off	Pairing failed
White light stay on for 1 s, then off	Reset completed
White light quick flashing	Firmware updating